



FROM PROTOTYPE TO PROTO-FREELANCE

A REALITY-CHECK JOURNEY

PERSONAL BACKGROUND

- DAD'S 16' X 8' LIONEL
- HO 8' X 6' AS A TEEN
- 1983 → GERMANY TRIP
 - N-SCALE GERMAN MODELS AND ROLLING STOCK
- TINY TEMPORARY LAYOUT FOLLOWED BY 2 SMALL UNFINISHED LAYOUTS
 - GAVE UP AROUND 2000
- RETIREMENT
 - BUILT NEW HOUSE IN BEAUFORT IN 2020 WITH 10' X 12' RAILROAD ROOM OFF GARAGE

QUESTIONS – PLEASE RAISE HANDS

Y

- DO YOU HAVE, OR ARE YOU PLANNING TO MODEL A PROTOTYPE?

PARTIAL

- DOES YOUR PROTOTYPE STILL EXIST?

MID-40's

- ARE YOU MODELING THE PAST OR THE PRESENT?

N

- DO ALL THE STRUCTURES YOU WANT TO MODEL STILL EXIST?

SOME PHOTOS

- IF NOT, DO YOU HAVE GOOD PHOTOS AND DRAWINGS?

SOSO

- ARE THERE GOOD SOURCES FOR ROLLING STOCK TYPES FOR YOUR ERA?

ONLY HOPPERS

- CAN YOU GET BRANDED ROLLING STOCK FOR YOUR RAILROAD?

SOSO

- IS THERE GOOD DOCUMENTATION FOR YOUR RAILROAD?

GREAT!

- DO YOU HAVE GOOD PEOPLE TO HELP YOU?

WHAT TO BUILD



CLUES



SPANISH MOSS TRAIL

LIFE

CHARLESTON & WESTERN CAROLINA RAILWAY



ALBUM



ALBERT M. LANGLEY, JR.

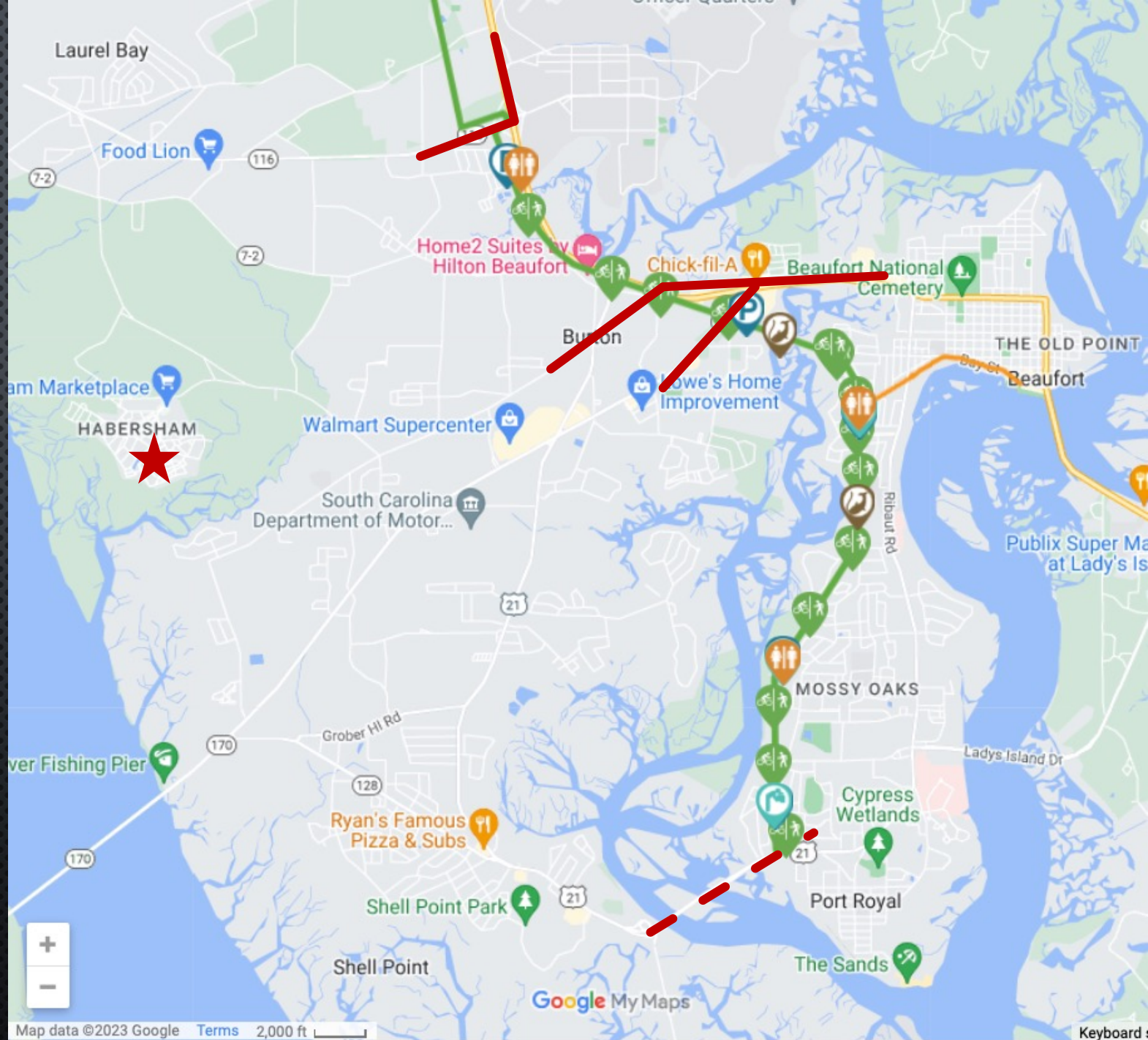




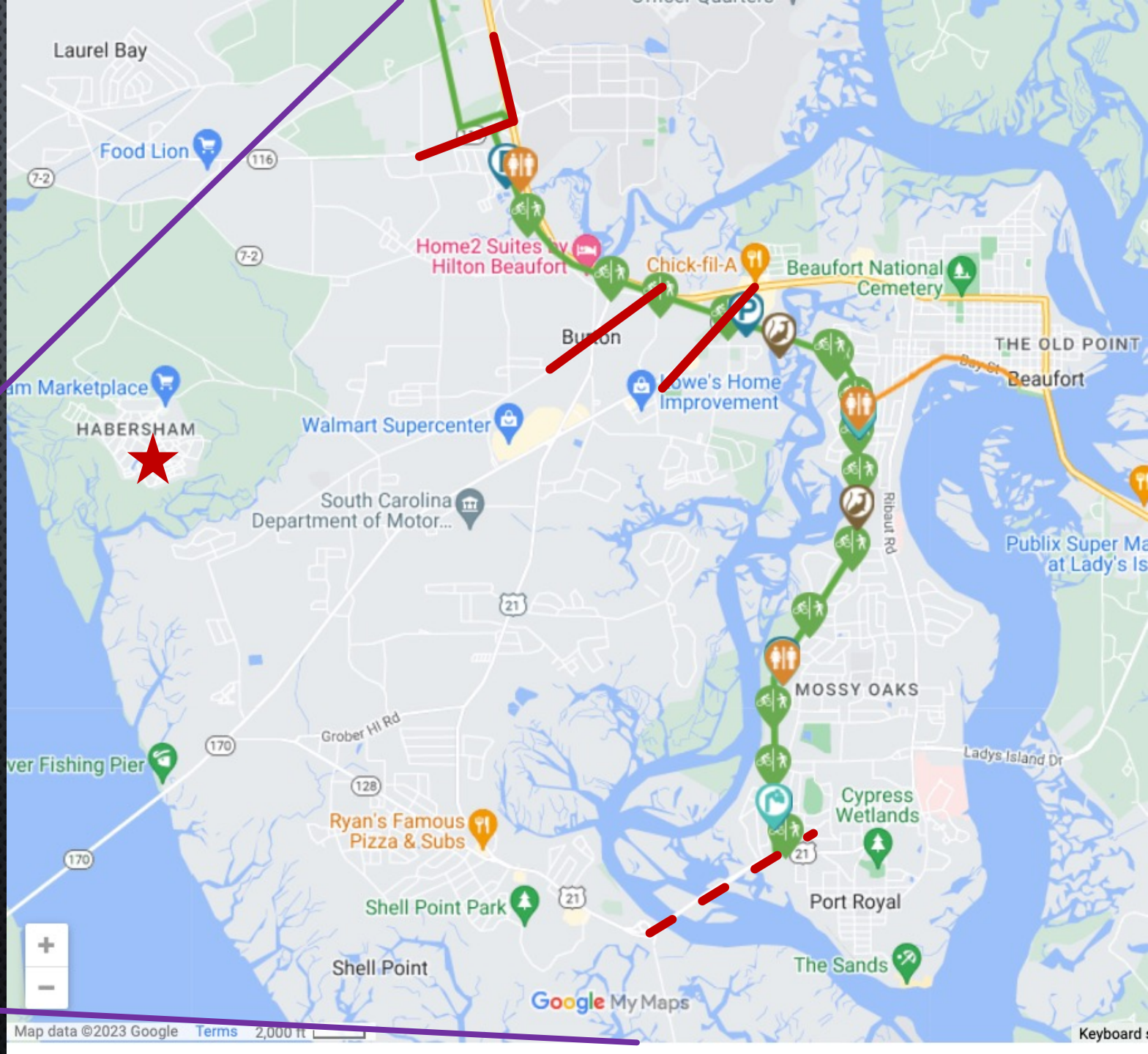
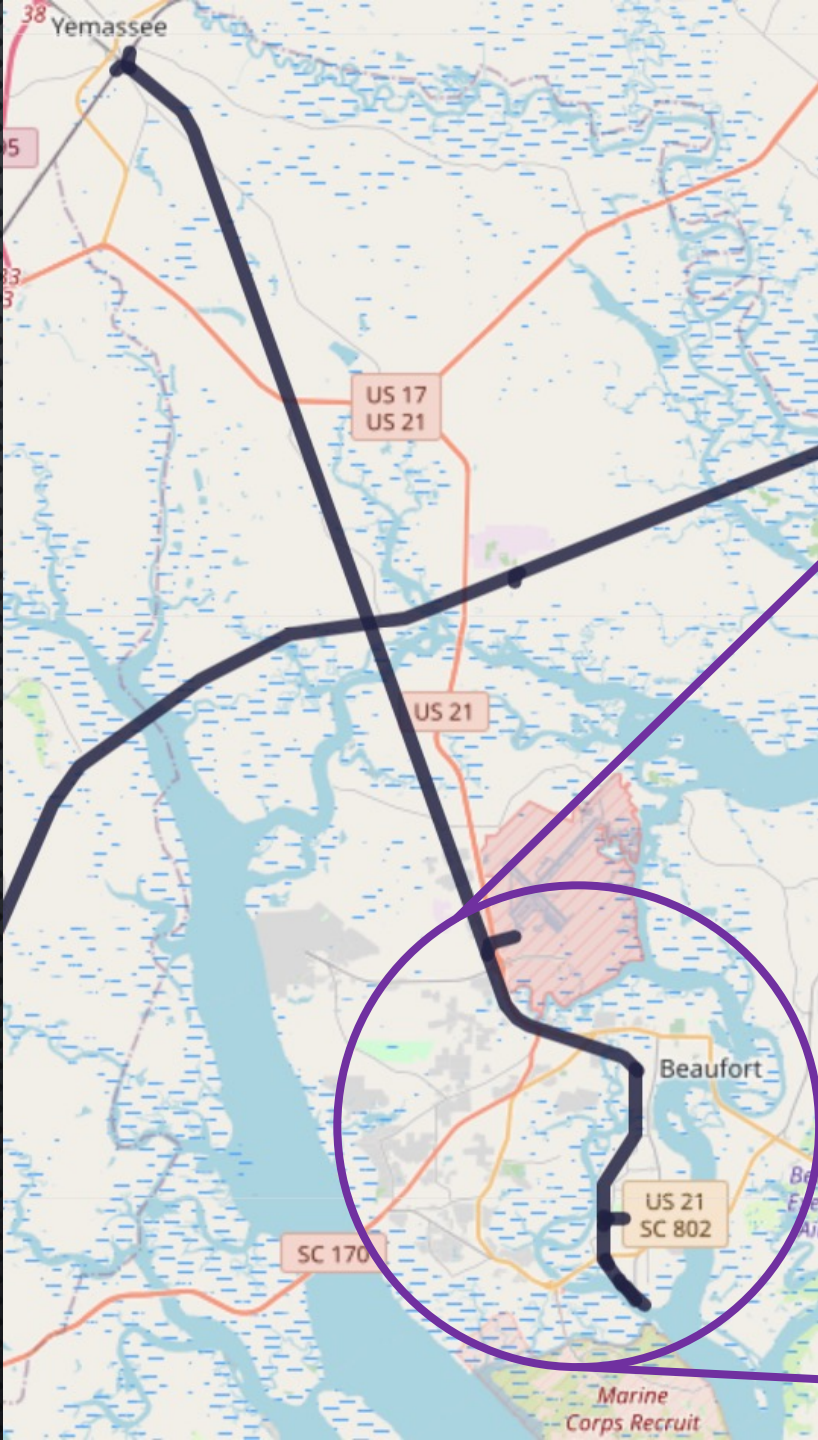
SPANISH MOSS TRAIL

Frank Emminger

- Researcher for interpretive signs on trail
- Wealth of local information
- Intro to Claude McLeod



ABANDONED RAILS WEBSITE



HISTORICAL RESOURCE

CHARLESTON & WESTERN CAROLINA RAILWAY



ALBUM



- HISTORY OF THE RAILROAD
- STATION PHOTOS
- SCHEDULES
- OUTBUILDING PHOTOS
- LOCOMOTIVE & ROLLING STOCK PHOTOS
- LOCOMOTIVE ROSTERS
- ROUTE MAPS

C.&W.C.

ALBERT M. LANGLEY, JR.

C.&W.C.

HISTORY

- 1856 – PORT ROYAL RAILROAD (TO AUGUSTA) – 5' GAUGE, 112 MILES
- 1873 – FINANCIAL DEFAULT
- 1878 – PORT ROYAL & AUGUST RAILROAD – THE MAGNOLIA ROUTE
 - *BLACK & DUSTY – THE ROAD TO AUGUSTY*
- (1886 – PORT ROYAL & WESTERN CAROLINA RAILWAY COMPANY – 4' – 9" GAUGE!
 - DID NOT INCLUDE PR&A)
- 1896 – CHARLESTON & WESTERN CAROLINA RAILWAY COMPANY
- 1894 – HAMPTON & BRANCHVILLE RAILROAD
 - JUNCTION WITH C&WC AT MAULDIN'S MILL, NEAR HAMPTON, SC
- 1897 – ACL ACQUIRES CONTROL OF C&WC
- TODAY – CSXT RUNS FORMER ACL & C&WC, W/INTERCHANGE AT YEMASSEE JUNCTION
 - 2003 – LAST TRAIN TO PORT ROYAL
 - 2011 – TRACKS FROM YEMASSEE TO PORT ROYAL TORN UP

LIFE MAGAZINE ARTICLE – MAY 4, 1942

LIFE SPENDS A DAY AT

Railroad wheels click off a “Win the War” chant at South Carolina

YEMASSEE JUNCTION

crossover of Atlantic Coast Line and Charleston & Western Carolina

LIFE C&WC MEETS ACL

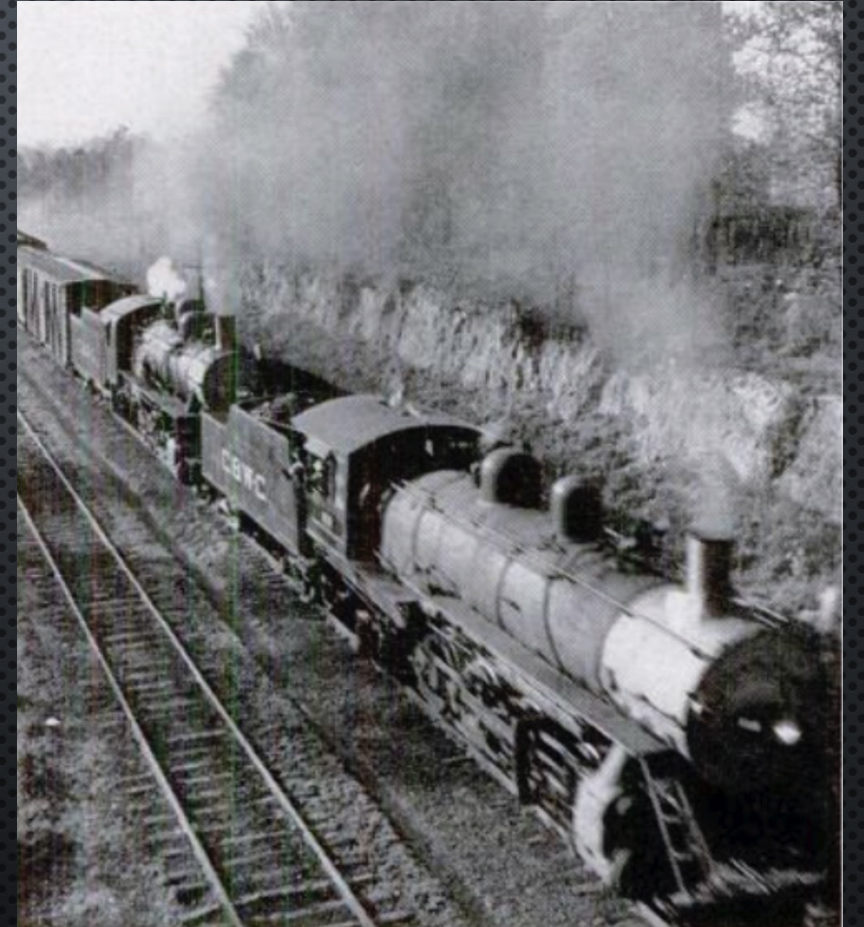




PLANNING CLUES



Fruit Growers Express Reefers on ACL



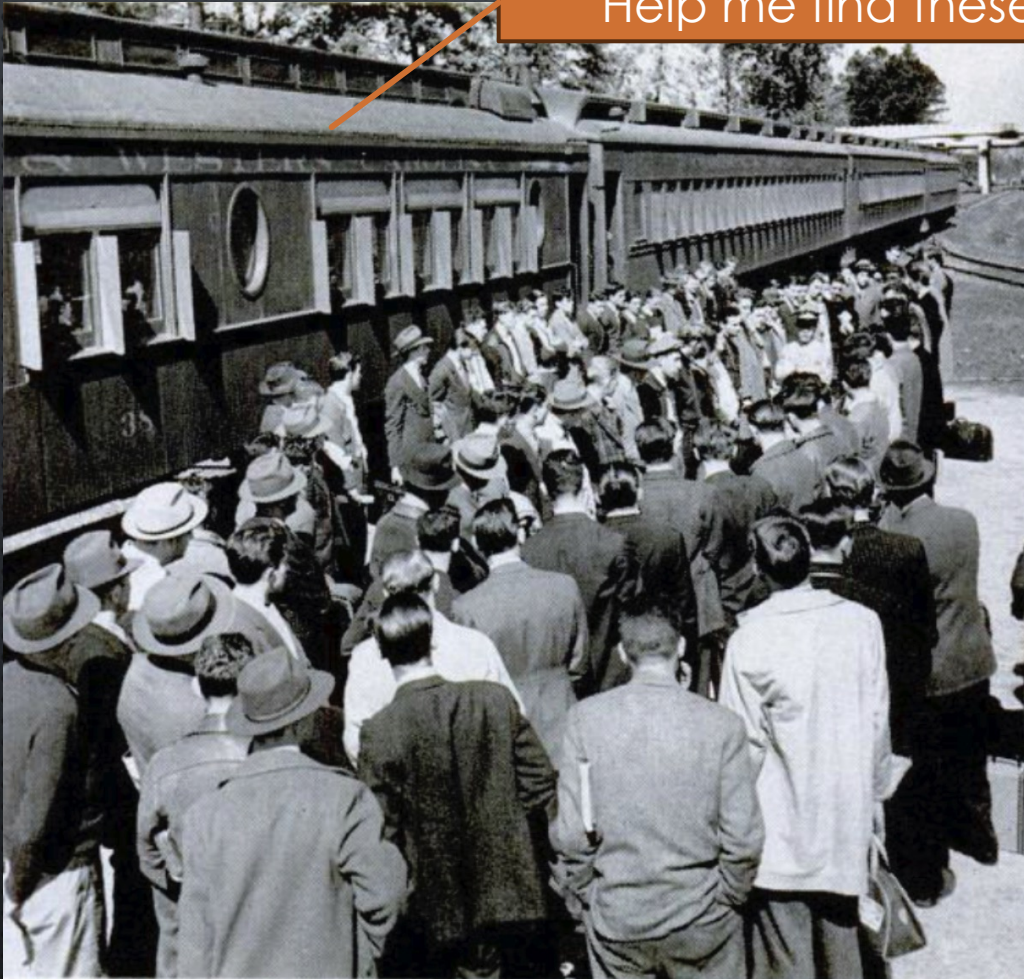
Try to find one in N-scale

Russian Decapod (front) and Mikado



PLANNING CLUES

Help me find these!



Passenger Cars for Marines Headed to Parris Island

Will likely use on ACL



Cooling Tower on C&WC

C&WC RAILWAY ALBUM STARTS THE DESIGN

- DROVE SELECTION OF S.C. TOWNS SERVED

- PORT ROYAL
- BEAUFORT
- YEMASSEE (INTERCHANGE W/ ACL)
- HAMPTON
- BRUNSON
- MARTIN

Key areas of compromise

- WHY?

- CLEAR REASONS TO BE TRAIN-SERVICED
- HAD PICTURES OF AT LEAST ONE BUILDING IN THESE AREAS



DRIVERS FOR OTHER TOWNS

- CUMMINGS
 - DISCOVERED ABANDONED SILOS
- SEABROOK
 - SWING BRIDGE OVER WHALE BRANCH
 - FOUND FOUNDATION OF PUMP HOUSE FOR WATER TOWER
 - ABANDONED SPUR TO WATER
 - HISTORIC HOME
 - MCLEOD VEGETABLE FARM BUILDINGS
 - ORIGINAL GENERAL STORE & PO



VARNVILLE



- ROW OF TALL PALMS ALONG TRACK
- DISCOVERED (w/DOUG SCOTT) GREAT BLOCK OF BUILDINGS FOR A FLAT
- DISCOVERED "OLD DEPOT"

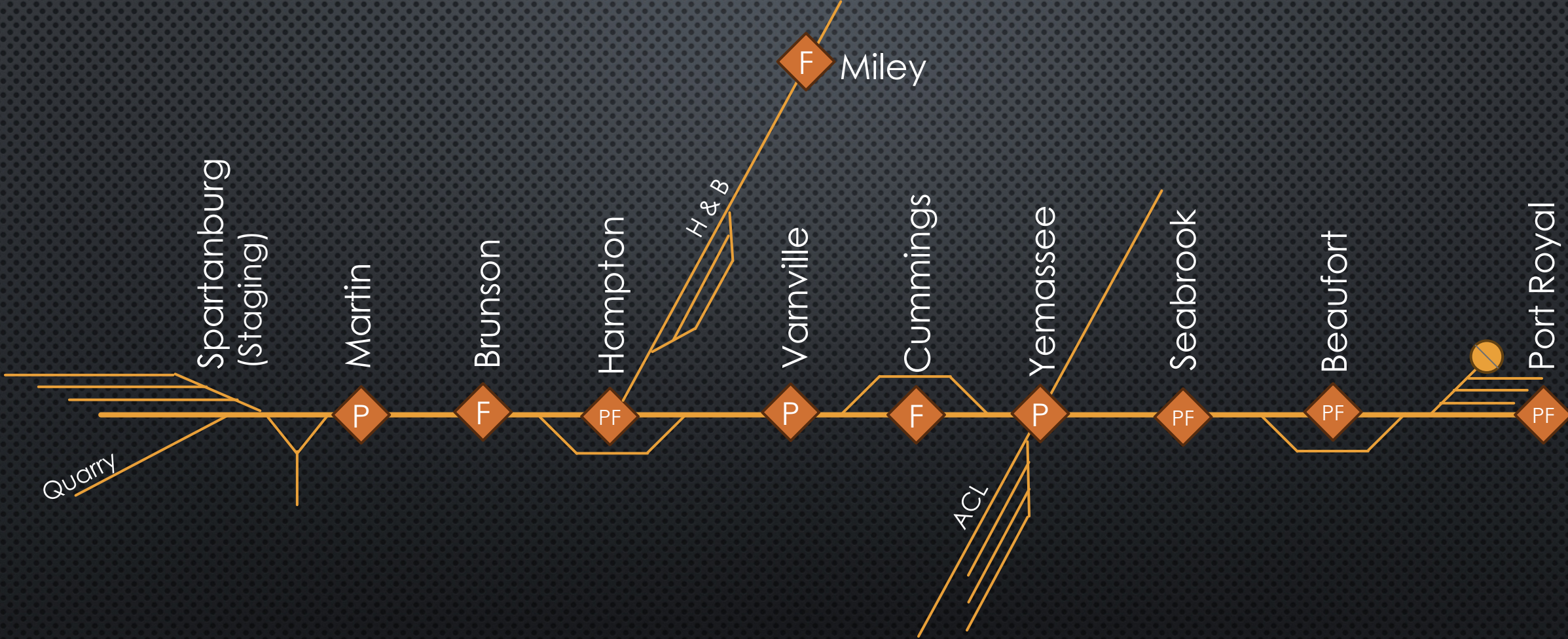


MILEY

- LIGHTSEY BROTHERS LUMBER CO.,
 - OFFICE, FREIGHT HOUSE
 - MILL, POWERHOUSE, FINISHED LUMBER SHED
- POST OFFICE
- ON THE HAMPTON & BRANCHVILLE LINE
W/ INTERCHANGE AT HAMPTON



THE LAYOUT TAKES SHAPE



PORT ROYAL

PORT ROYAL

- BUSY PORT THROUGH THE EARLY 20's
- BY 1942, MAINLY
 - COAL FOR PARRIS ISLAND
 - MARINE RECRUITS TO PARRIS ISLAND



1951

PORT ROYAL

- **Dilemma 1**

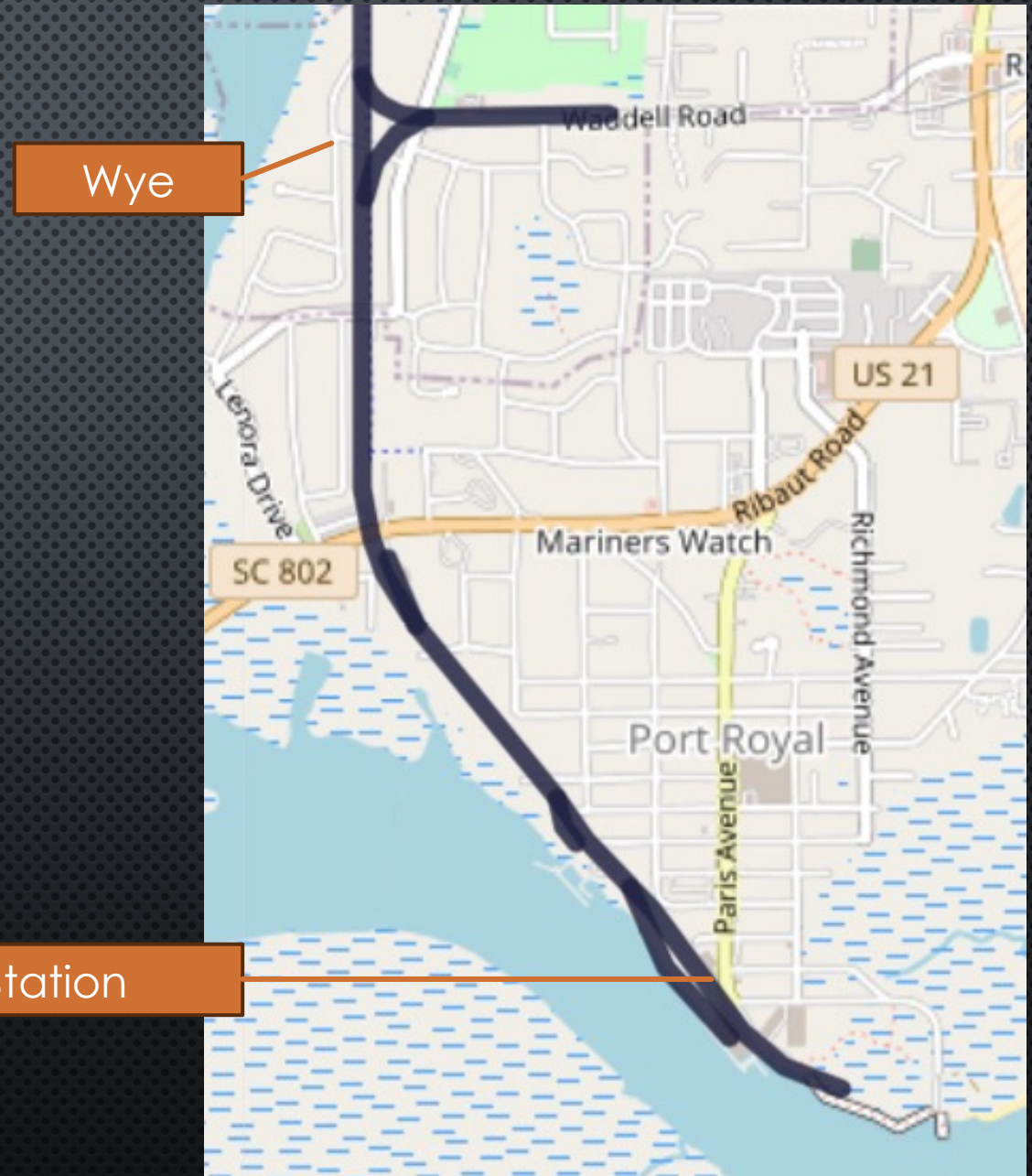
- Wye used to turn passenger trains and back into Port Royal
- No room to build a wye for 42" train

- Approach

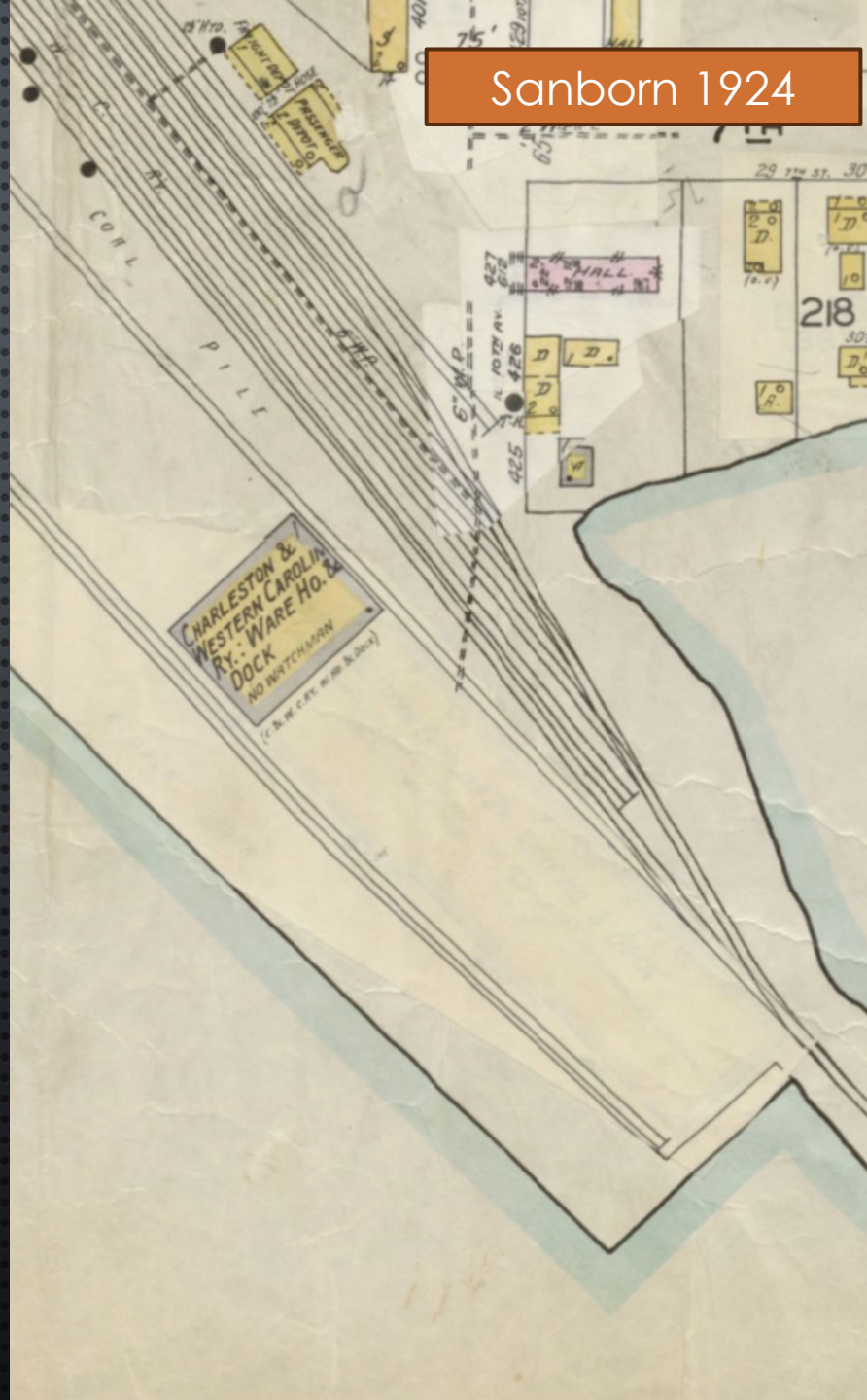
- Turntable to reverse engine (and ideally baggage car)

- Later

- Heard rumor that turntable was near Port Royal



EARLY PORT ROYAL YARD & WAREHOUSE



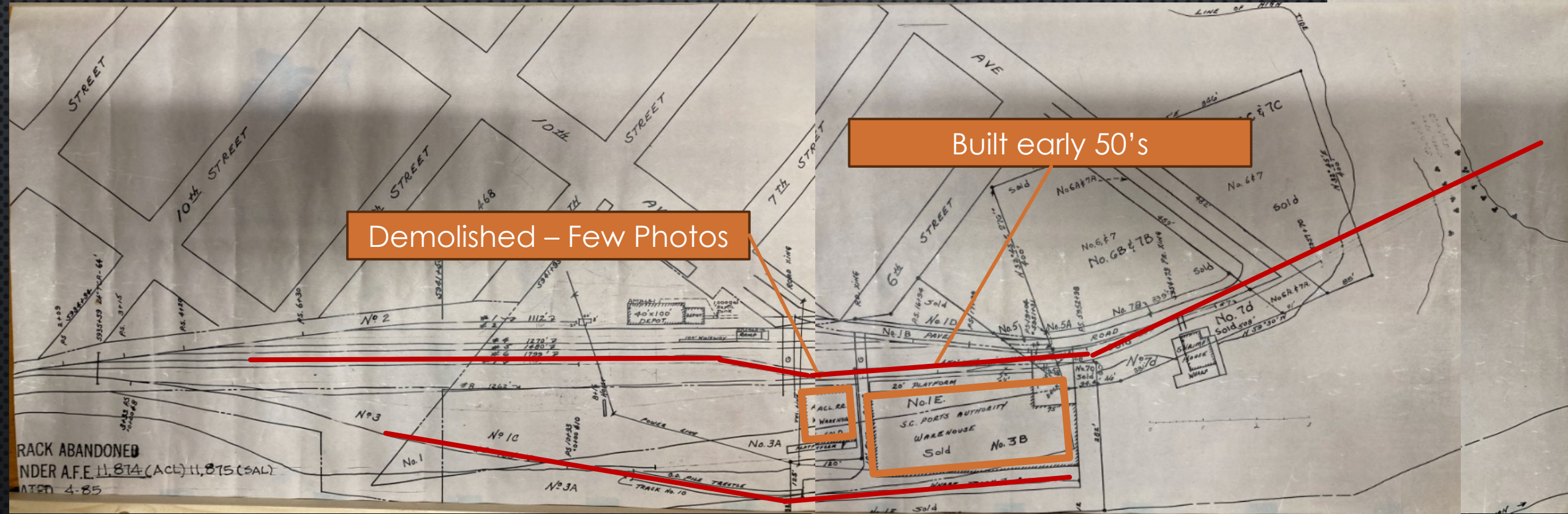
EARLY PORT ROYAL

Original Warehouse



Loading Ramps

1950'S PORT ROYAL *Dilemma 2*



1950'S PORT ROYAL



PORT ROYAL SOLUTIONS

Dilemma 1 Solution → "Finstrong" Turntable

Stub for track in front of Warehouse

Dilemma 2 Solution → 1950's Warehouse

Freight Depot and Passenger Station

Trestle for Coal to Parris Island



BEAUFORT

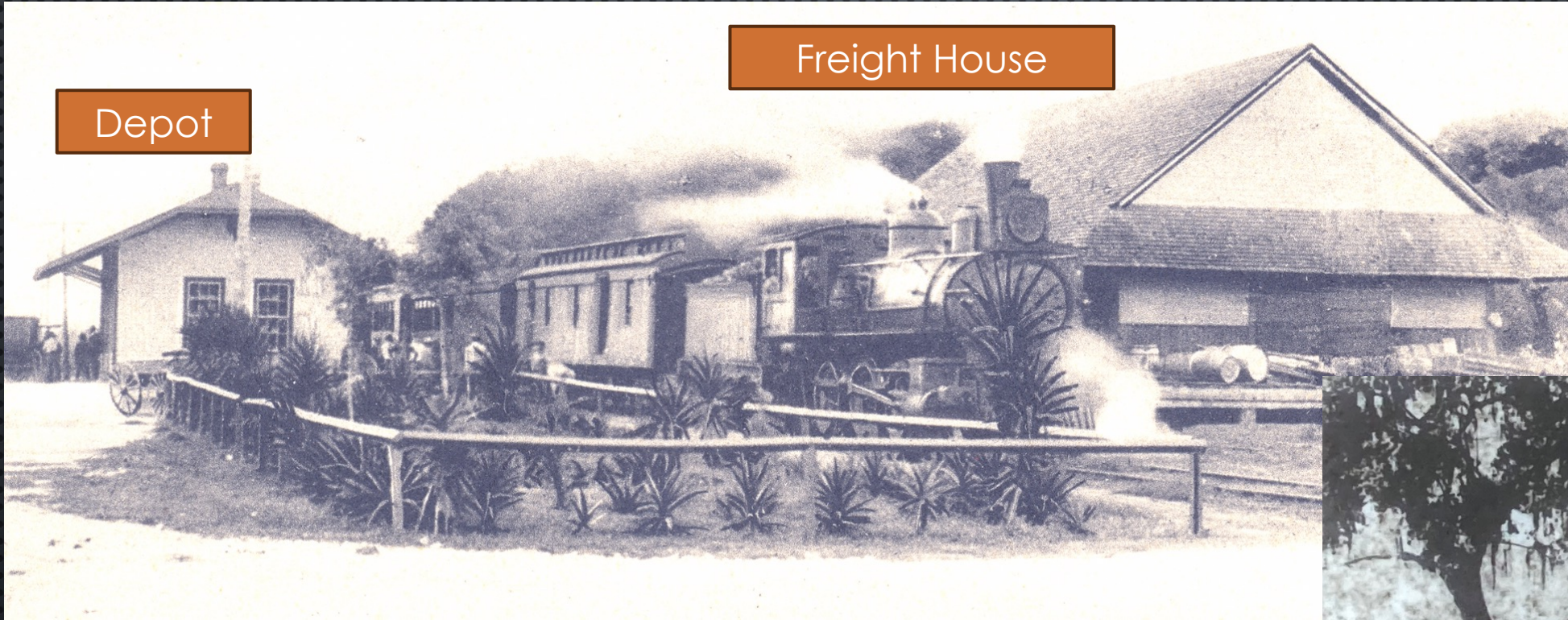
BEAUFORT – *DILEMMA* #3

No one I've talked to believes that the station ever looked like this!



BEAUFORT DEPOT

Only images I've found so far



- What did the depot look like?



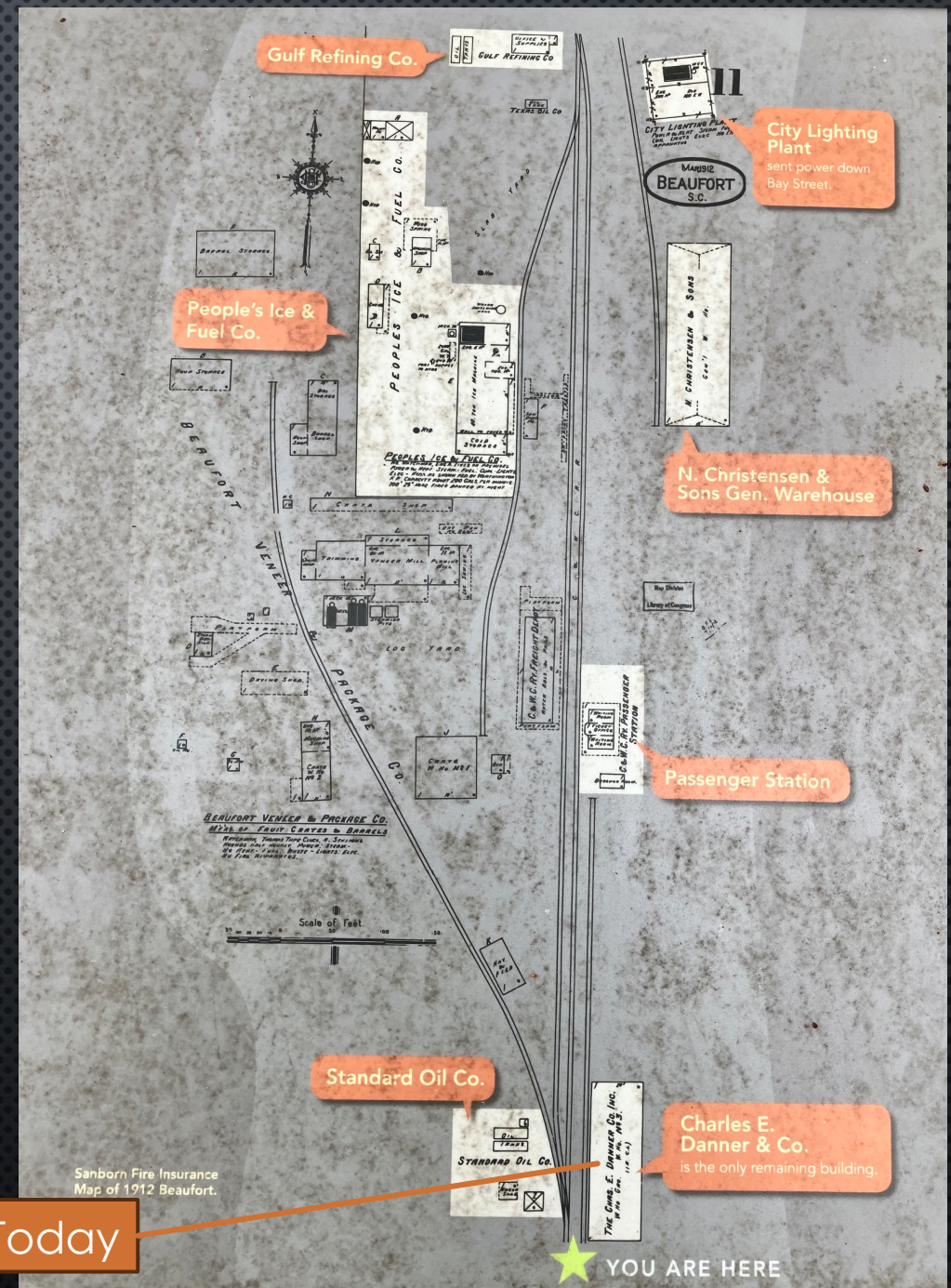
Demolished 1974

BEAUFORT – DILEMMA # 4

- Most of these business were gone by the 1940's!
- No photos found
- What did they look like?



Only Remaining Building Today



PICKLE FACTORY – *DILEMMA #5*

- Between Beaufort & Port Royal
- Purpose
 - 1921 – Meat packing
 - 1932-1942 – Pickle / tomato canning
 - 1943 – 1944 – Closed
 - 1945-1947 – Pickle / tomato canning
 - 1947 – Closed
- *Dilemma – no photos from 40's (yet)*



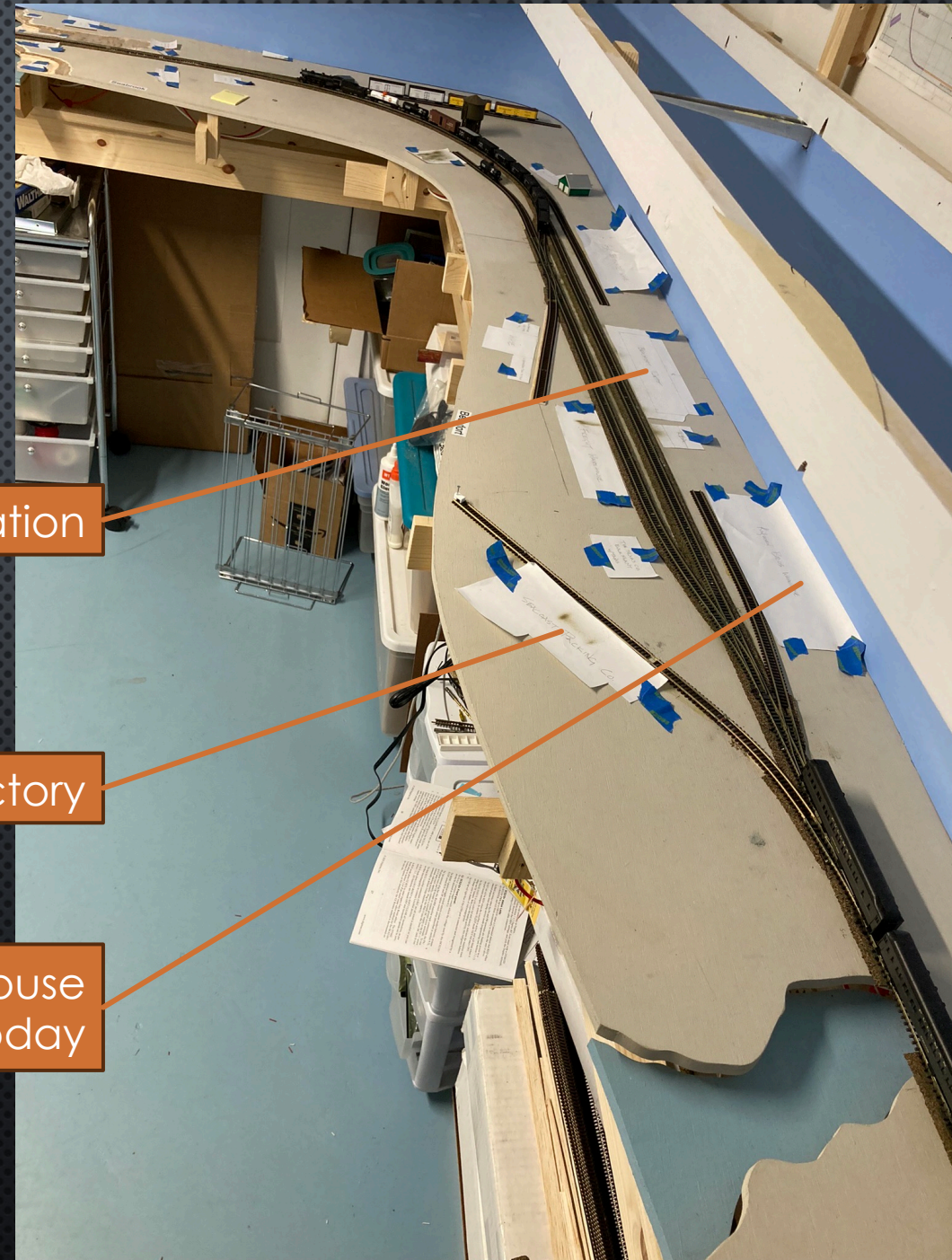
BEAUFORT SOLUTIONS

- CONTINUE TO SEARCH FOR PHOTOS
- FIELD MEASURE & PHOTOGRAPH PICKLE FACTORY & DANNER WAREHOUSE
- BE INVENTIVE
- USE OR KITBASH MODELS FROM THE PERIOD

Beaufort station

Pickle factory

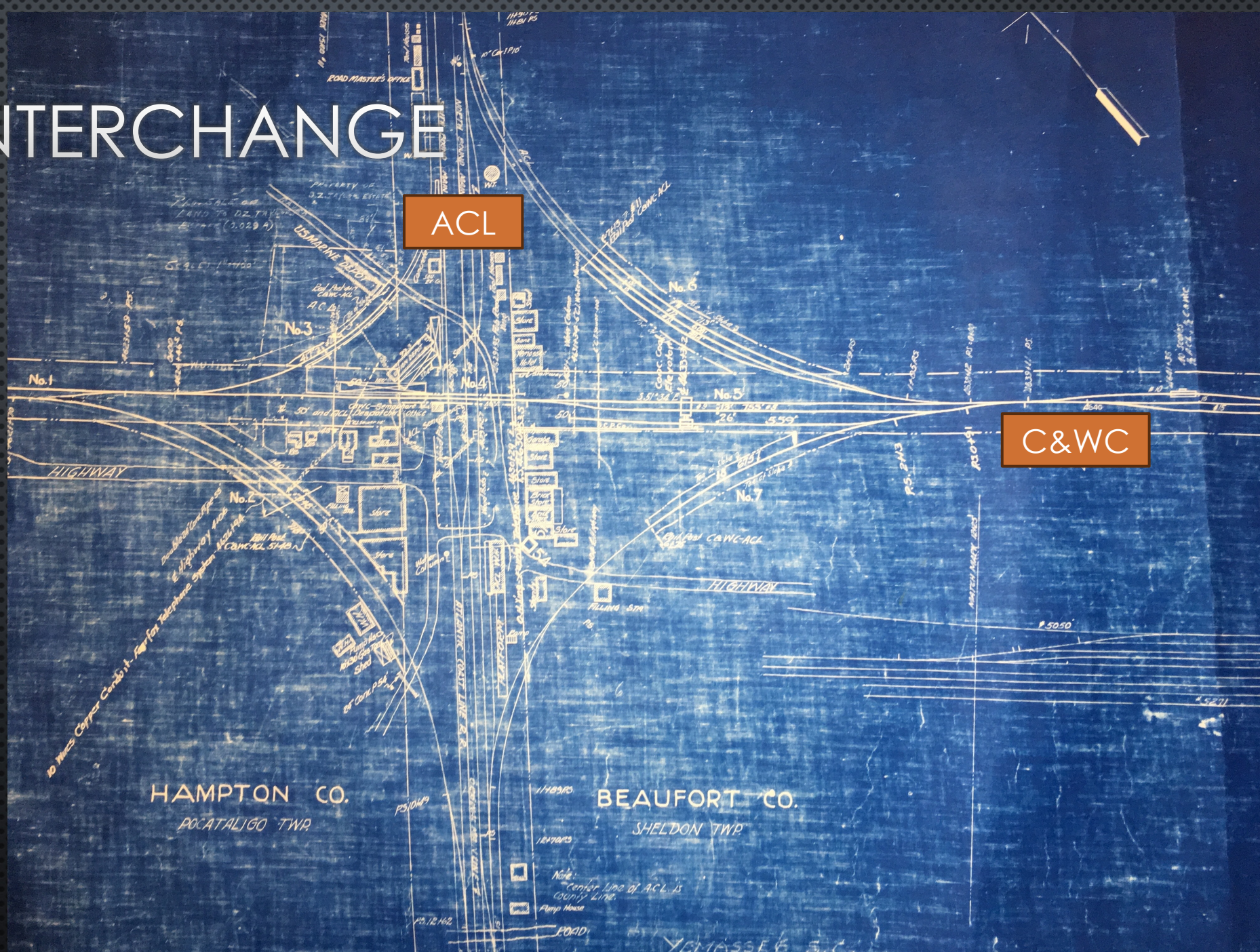
Danner Warehouse
Only Remaining Building Today



YEMASSEE

YEMASSEE INTERCHANGE

- WOULD BE COOL TO MODEL THE WHOLE THING...
 - IF I HAD THE SPACE
- A LOT OF THIS WAS GONE BY 1940's

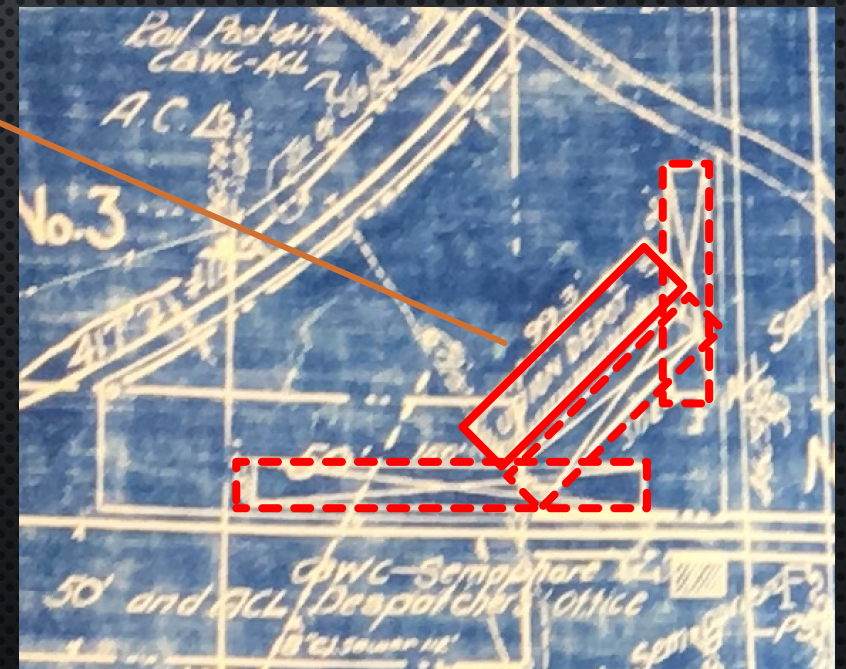
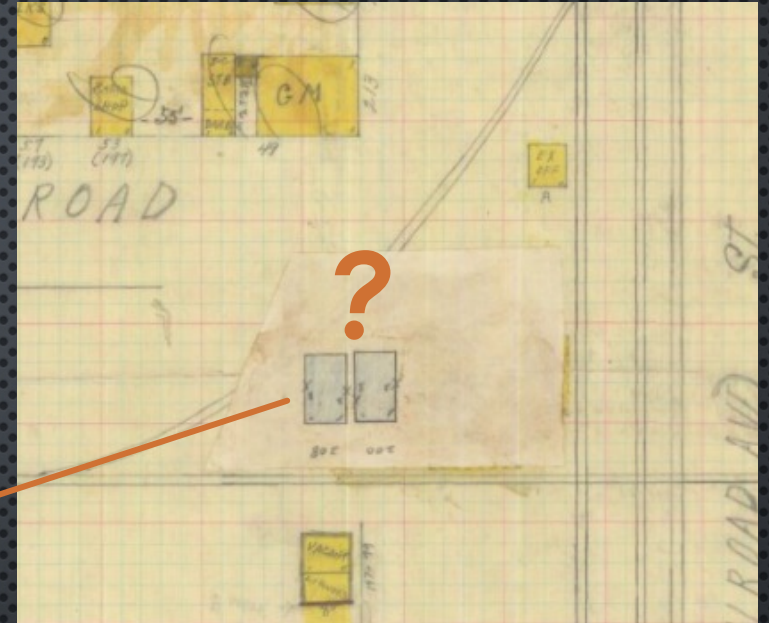


YEMASSEE STATION

DILEMMA #6

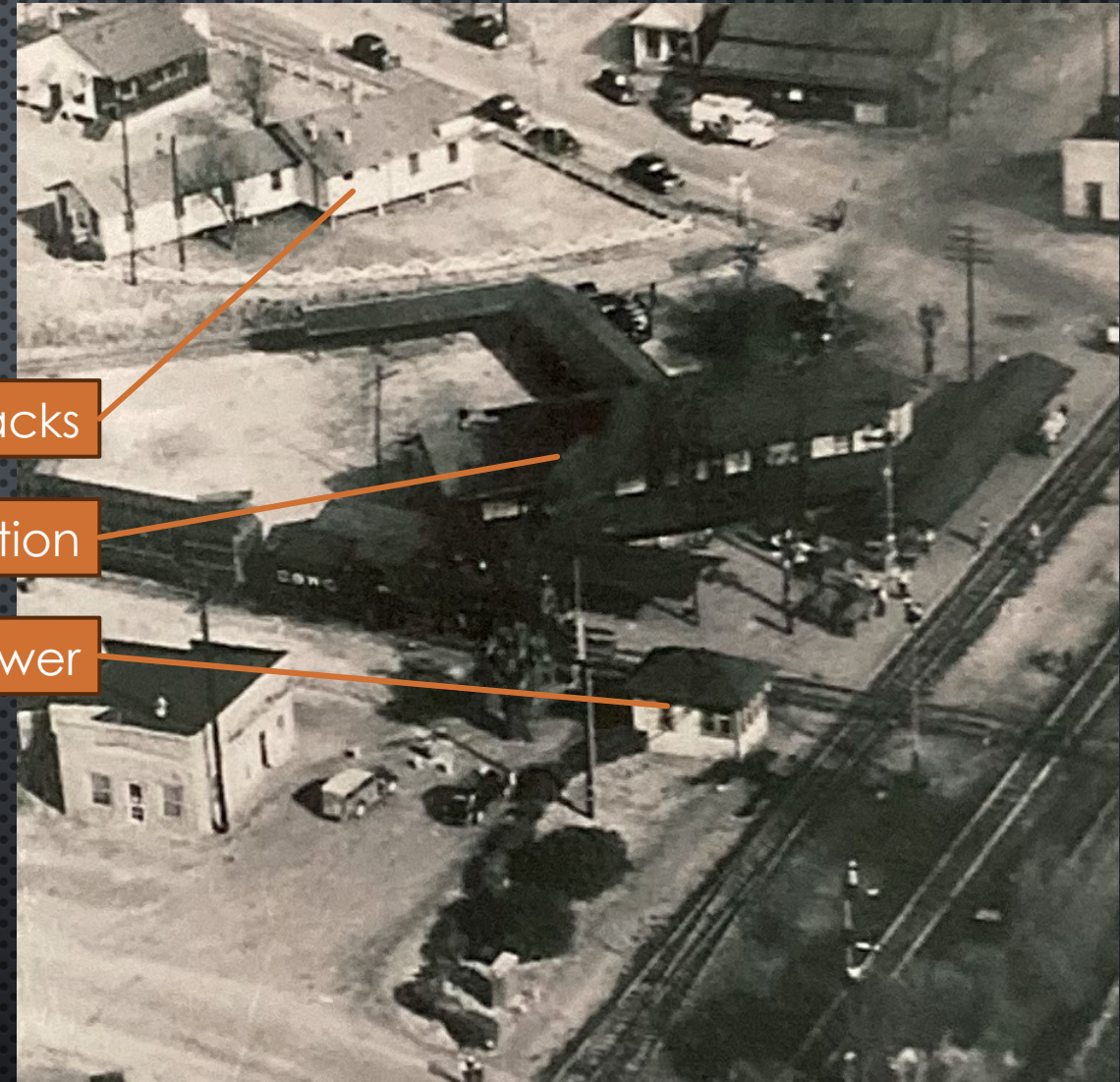
- SANBORN MAP
 - CREATED 1940
 - UPDATED 1947, 1958
 - ORIGINAL STATION COVERED UP
- PARTIAL SOLUTION
 - BLUEPRINT SHOWS PLAN OF STATION
 - STILL NEED PHOTOS

Yemassee station



YEMASSEE – *DILEMMA #6*

- A FEW HELPFUL PHOTOS
- STILL NEED ELEVATION SHOTS
- STILL TO REVIEW – WW1 MOVIES



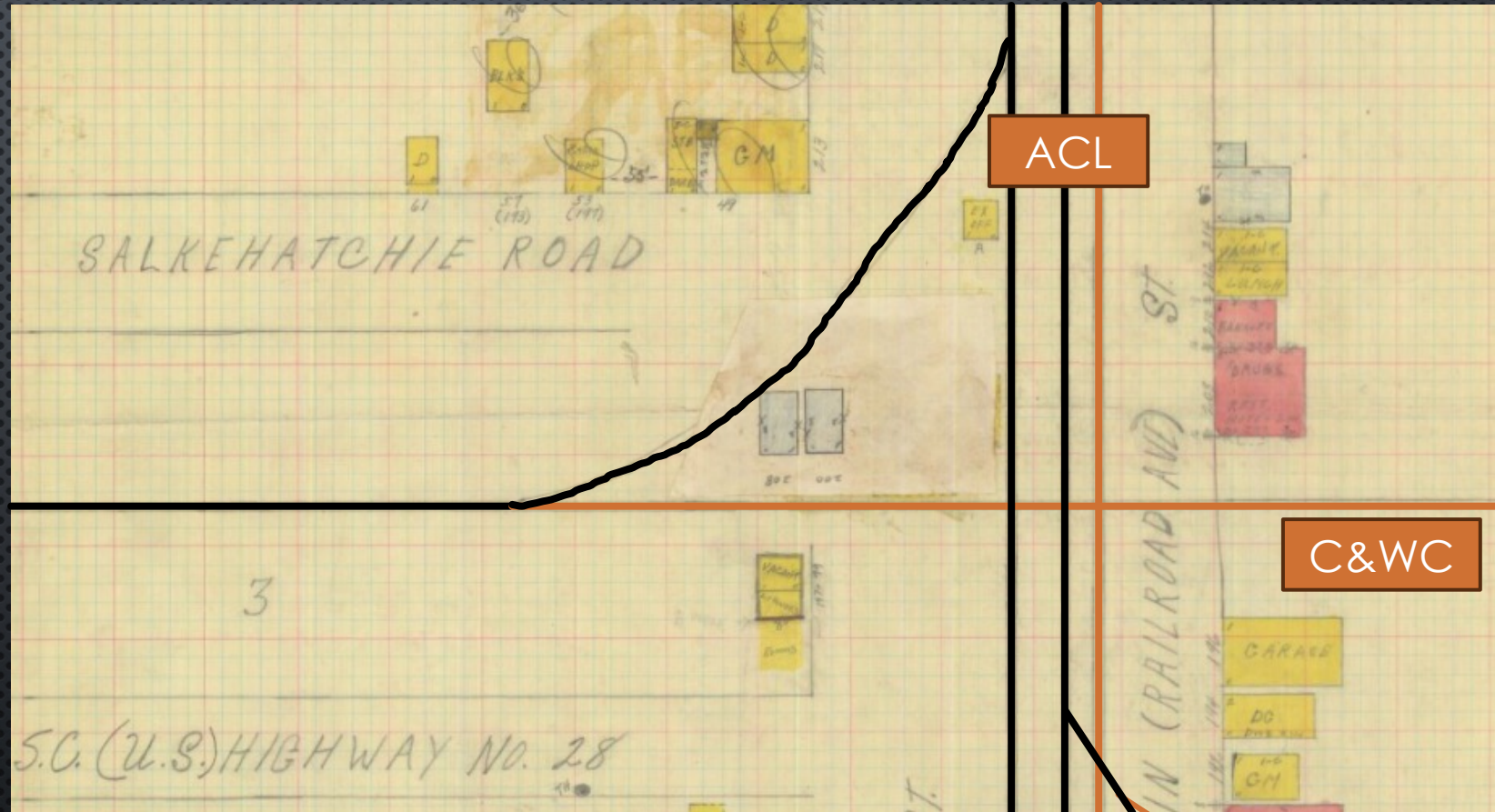
Marine Corps Barracks

Yemassee station

Tower

YEMASSEE – **DILEMMA #7**

- THIS IS ALMOST THE SAME ARRANGEMENT THAT EXISTS TODAY
 - BLACK EXISTS
 - ORANGE NO LONGER EXISTS



Lead to small yard

YEMASSEE – **DILEMMA #7** SOLUTION

- ACL
 - INTERCHANGE STUB
 - SOUTH TRACKS PART OF YARD
- MY LAYOUT CHANGES FROM THE 1940's
 - BLACK EXISTS
 - ORANGE NO LONGER EXISTS

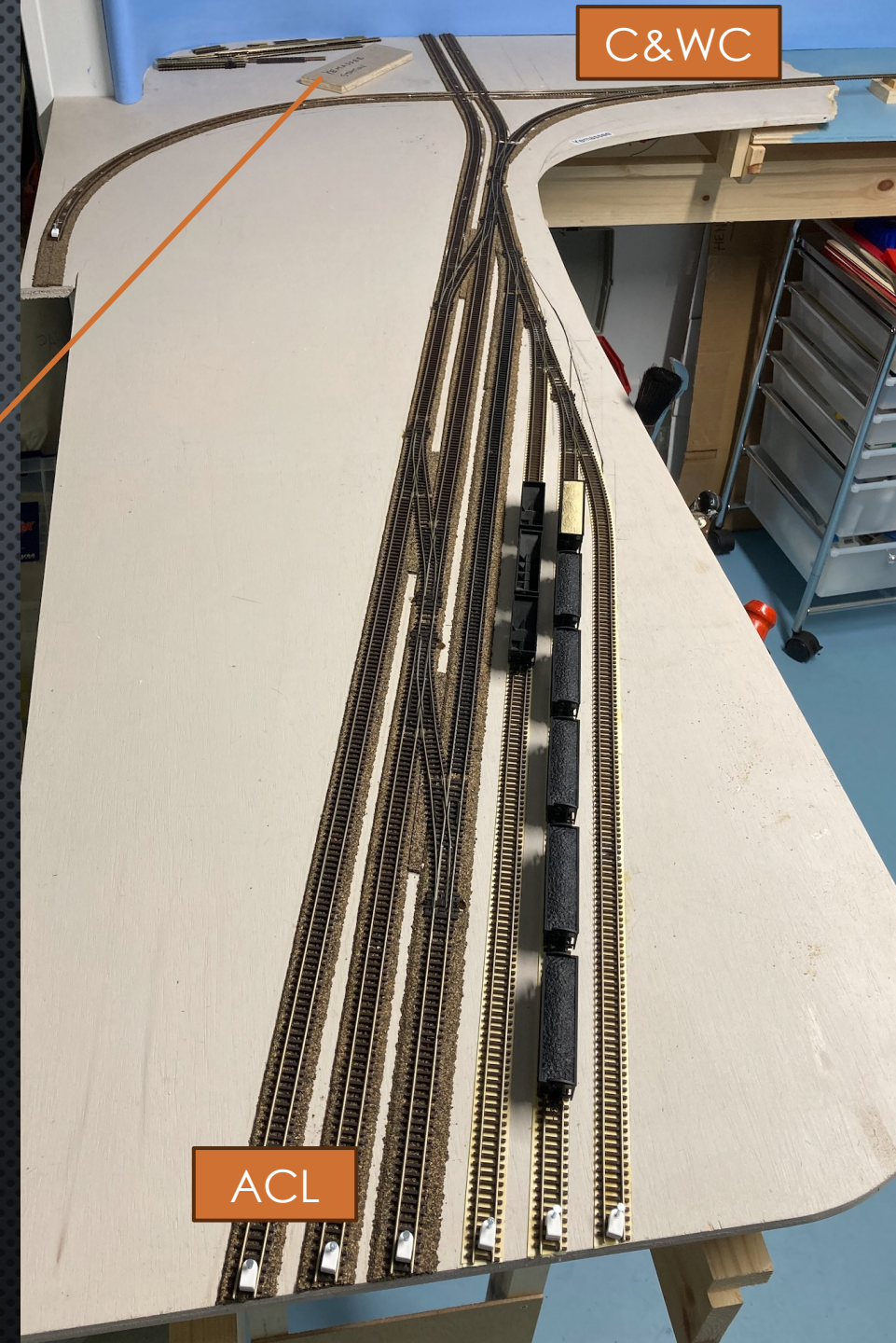


Lead to small yard

YEMASSEE – *DILEMMA #7* SOLUTION

- ACL
 - INTERCHANGE STUB
 - SOUTH TRACKS PART OF YARD

Yemassee station



ACL

ROLLING STOCK

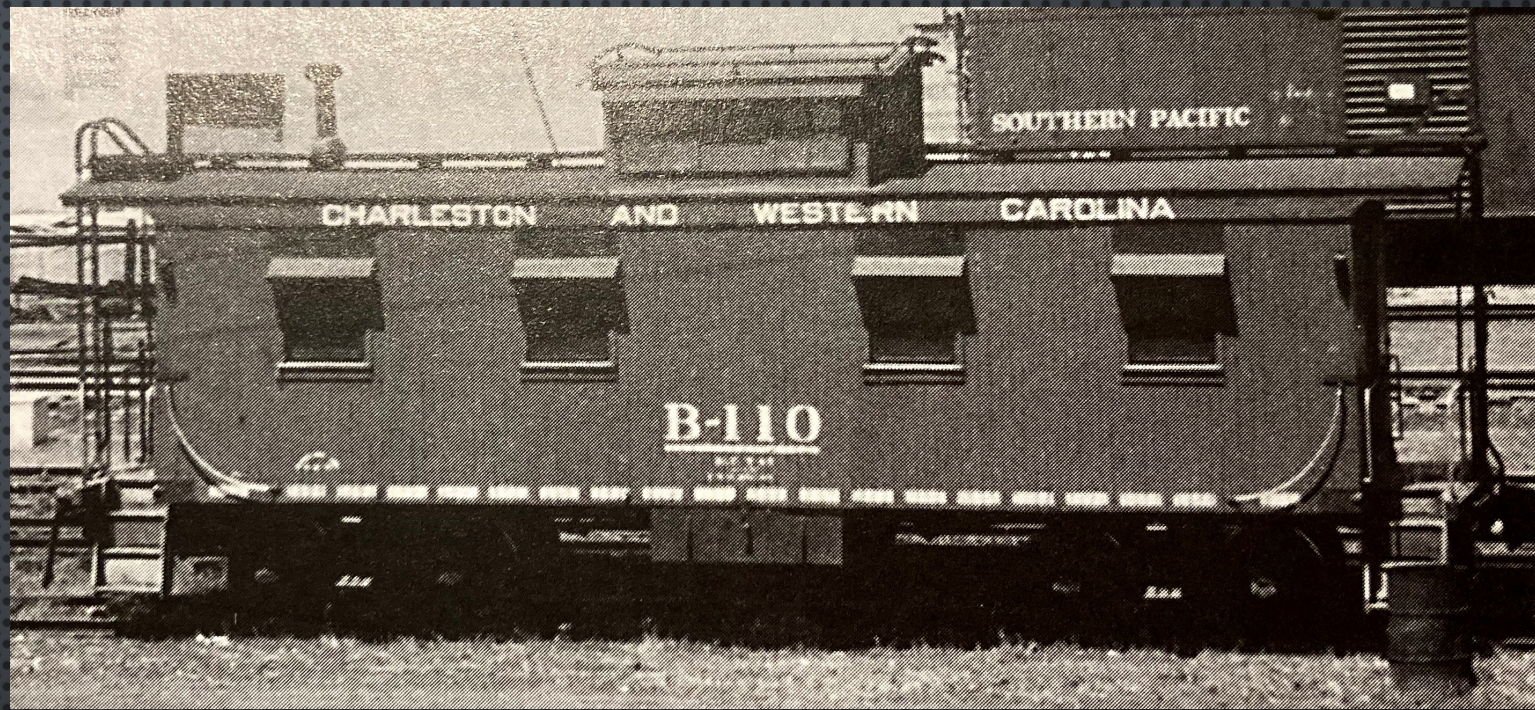
ROLLING STOCK – **DILEMMA #8**

- STILL LEARNING WHAT GOODS WERE MOVED, AND WHERE
- LIMITED SELECTION FOR 1940's
- SEVERELY LIMITED SELECTION FOR C&WC
- POOR DOCUMENTATION ABOUT PRODUCTS OFFERED
 - YEAR FIRST BUILT
 - YEARS REMAINING IN SERVICE
- EXAMPLE: ACL / C&WC CABOOSE
 - WHAT COLOR WAS IT REALLY?



THE CABOOSE

FROM C&WC RAILWAY ALBUM
BUILT 1924 – 1944



EXAMPLE IN VARNVILLE



3-D PRINTED VERSION



CONCLUSION

WHY MY RAILROAD IS PROTO-FREELANCE

- TIMEFRAME COMPROMISE
 - 2 – USE 1950'S WAREHOUSE IN 1940'S LAYOUT
- OPERATIONAL COMPROMISE
 - 1 – NO ROOM FOR WYE, SO USE TURNABLE
 - 7 – REARRANGEMENT OF INTERCHANGE AT YEMASSEE
- ARCHITECTURAL COMPROMISE / WORKAROUNDS
 - 3 – UNCLEAR EVIDENCE OF BEAUFORT STATION ARCHITECTURE
 - 4 – NO EVIDENCE OF BEAUFORT BUILDINGS ARCHITECTURE
 - 5 – NO EVIDENCE OF PICKLE FACTORY FINISHED APPEARANCE
 - 6 – LACKING PHOTOS OF YEMASSEE TRAIN STATION
- 8 – ROLLING STOCK COMPROMISE – SOLUTION TBD

RESOURCES

- CHARLESTON & WESTERN CAROLINA RAILWAY ALBUM BY ALBERT M. LANGLEY, JR.
- FRANK EMMINGER – SPANISH MOSS TRAIL
- ABANDONED RAILS WEBSITE
- SANBORN FIRE INSURANCE MAPS
- ORIGINAL RR BLUEPRINTS FROM BUDDY HILL – ACL-SCL HISTORICAL SOCIETY
- HISTORIC PORT ROYAL FOUNDATION & MUSEUM
- STEVEN WISE – PARRIS ISLAND MUSEUM CURATOR
- LAWRENCE ROLANDS – EMERITUS HISTORY PROFESSOR, USCB
- PETE COTTER – FORMER OWNER OF PORT ROYAL WAREHOUSE 21
- CLAUDE MCLEOD – GRANDSON OF MCLEOD FARMS FAMILY
- COMPREHENSIVE RAILROAD ATLAS OF N.A.
- S.C. PHOTO PROJECT