



BOX CAR BUILDING INSPIRATION

RICK GARTRELL

OVERVIEW

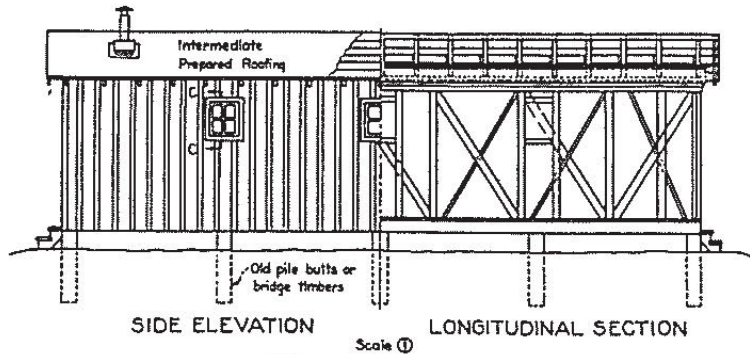
- STANDARD DIAGRAMS AND DRAWINGS – BUT FEW EVER BUILT TO THE STANDARD
- PROTOTYPE EXAMPLES
- MODELS

OLD BOX CAR USES

- OLD BOX CARS (AND PASSENGER CARS) USED AS OFFICES AND STORAGE BUILDINGS COMMONLY WITHIN SMALL YARDS, TERMINALS AND SOMETIMES NEAR STATIONS.
- IN A FEW SITUATIONS THEY COMPRISED A FREIGHT STATION ALONG TEAM TRACKS IN SMALL TOWNS.
- PRACTICE STARTED AS OLD WOODEN BOX CARS WERE RETIRED IN THE 1920S AND 1930S; LATER STEEL BOX CARS CAME TO BE USED. SOME LASTED IN USE WELL INTO THE 1960S AND 1970S.

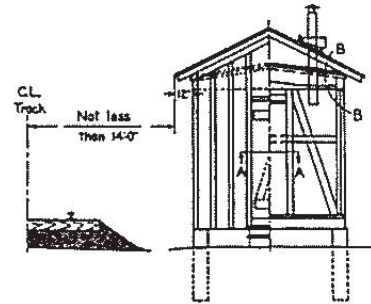
STANDARDS

- USING OLD BOX CARS BECAME SO COMMON THAT STANDARD DIAGRAMS AND DRAWINGS WERE DEVELOPED WHICH SPECIFIED
 - ROOFING
 - SIDING
 - SIZE AND NUMBER OF WINDOWS
 - DOORS
 - PILINGS
 - COLOR
 - AND MORE
- BUT, FEW SEEM TO HAVE BEEN BUILT PER THE SPECS



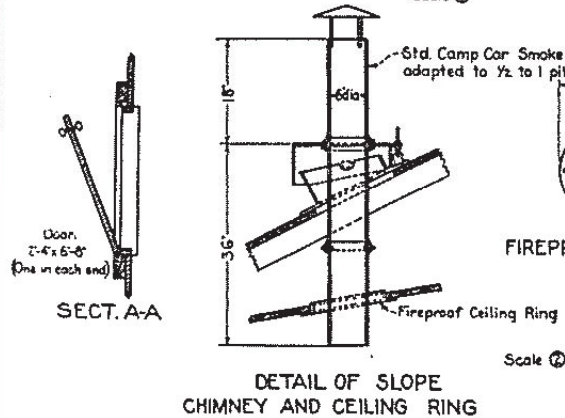
SIDE ELEVATION LONGITUDINAL SECTION

Scale ①



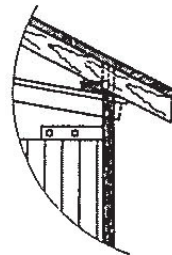
END ELEVATION CROSS SECTION

Scale ①

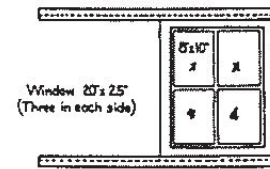


SECT. A-A

FIREPROOF CEILING RING



SECT. B-B.



DETAIL OF WINDOW

Scale ②

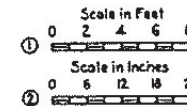


SECT. C-C.

SIZES OF LUMBER REQUIRED

Size	Finish	Spec.	Where used
1x3	D4S	50	Battens
1x4	D4S	49	Tie rafters-
1x6	D2S	46	Ridge
1x12	D1S	46	Siding, Roof
2x4	Rough	44	Rafters; Studs
2x8	D4S	46	Window sills
1x8	D4S	46	Face boards

Note: All lumber to be Yellow Pine.



Note:
Roof not to be removed, except such portions as may be necessary. New roof, on a 6 inch to 1 foot pitch, to be built over old roof, as shown. Siding to be removed and replaced with 1x12 siding laid vertically. 1x3 O.G. battens to cover all joints and corners. Studding not to be moved except to conform to size of doors. Truss rods, safety appliances, drawheads, and all protruding parts of car to be removed. Building to be placed a minimum distance of 14'-0" from the center line of the nearest track.

This standard covers method of converting old box cars to buildings. Such buildings to be painted in standard colors to conform with adjacent railroad buildings.

Approved: Standards Committee

W. C. ...
Chairman

Approved: *...*
Vice President-Operation

REVISIONS	THE CHESAPEAKE AND OHIO RAILWAY COMPANY THE HOCKING VALLEY RAILWAY COMPANY
	STANDARD BOX CAR BUILDING
ENGR. MAINT. OF WAY C.&O. RY.-RICHMOND, VA. OCT. 17, 1927.	DRAWING NUMBER S.C.-7

PROTOTYPE EXAMPLES



Along South Side Junction near Thurmond, WV
Source: COHS-41254

EXAMPLES



Source: COGH-412

EXAMPLES



Wayland, KY
Source: COHS-2755, 2577, 2578



EXAMPLES



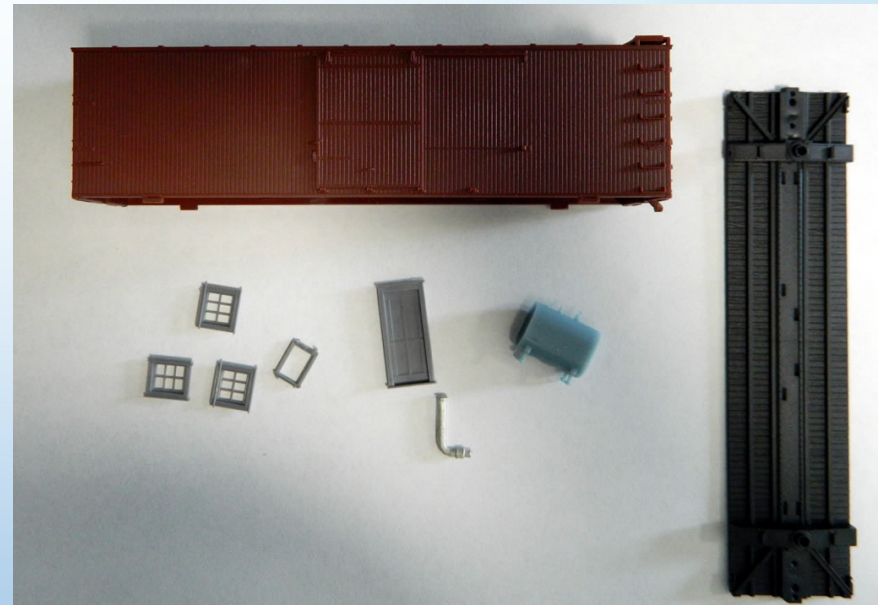
EXAMPLES



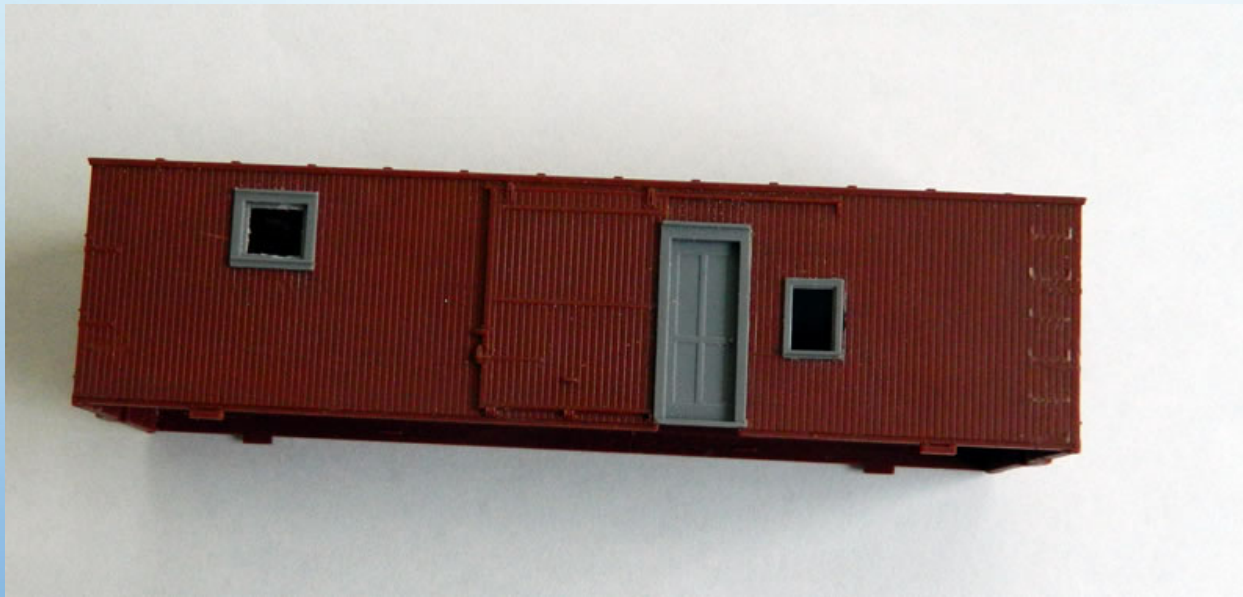
Quinnimont, WV
Source: COHS-44378

MODELS

- EASY PROJECT:
 - WOOD, DOUBLE SHEATHED BOX CAR
 - WINDOWS, DOORS, SMOKE JACK
 - STYRENE SHEET AND SHAPE STOCK
 - 'TAR PAPER' ROOFING
 - OTHER DETAILS AS DESIRED
 - PAINT, GLUE

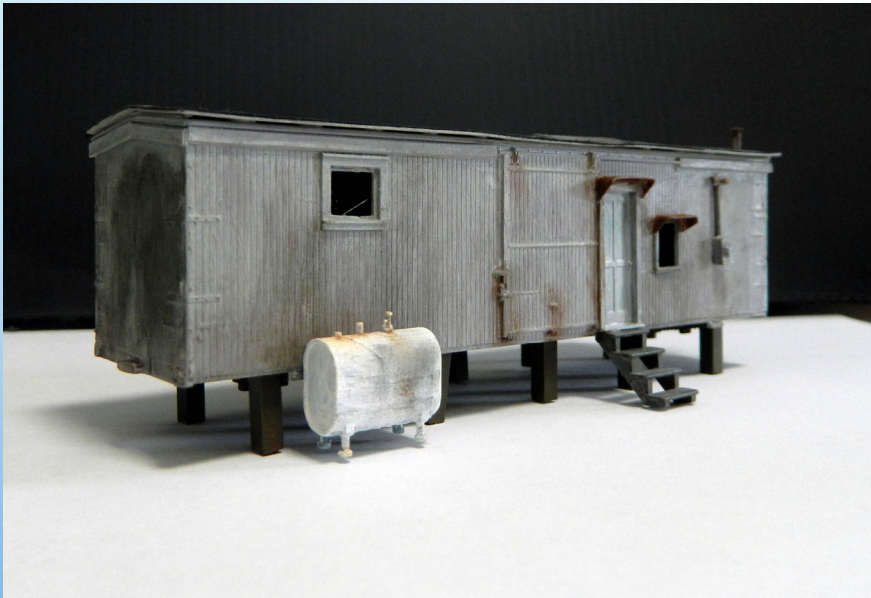


MODELS



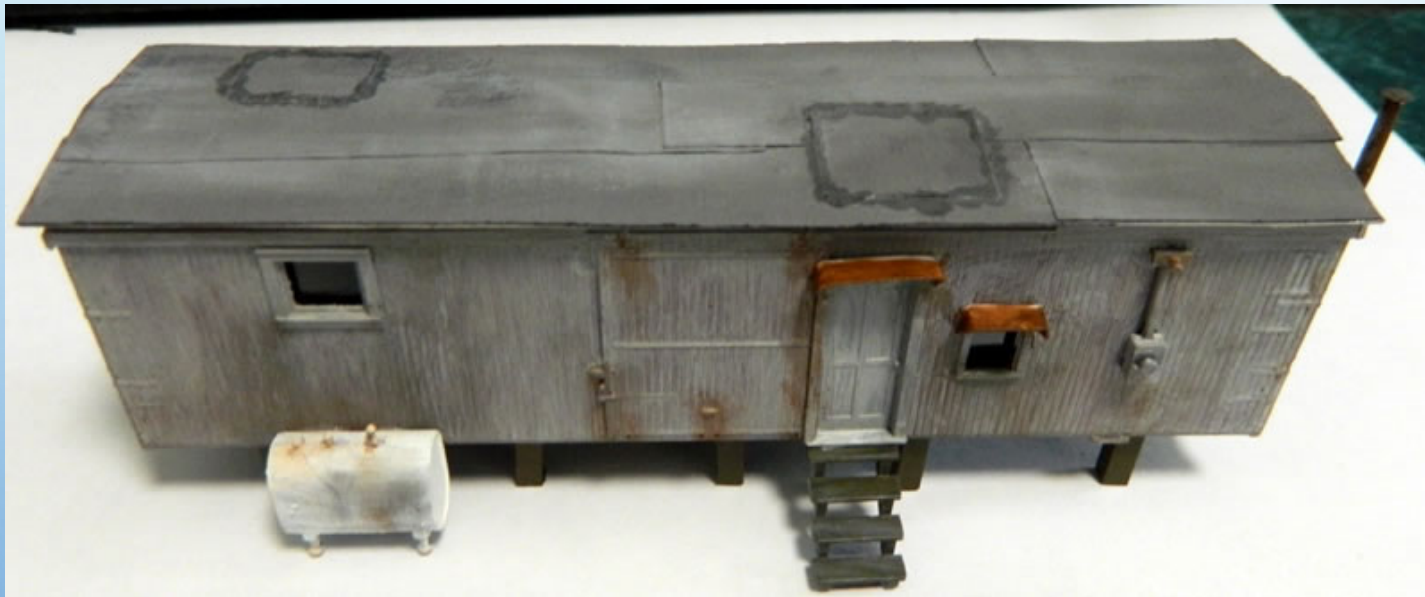
Remove grab irons
Remove roof walk
Remove brake
platform
Cut holes for windows
and door
Glue windows and
doors into place

MODELS



Completed building side view

MODELS



Completed
building top view

MODELS



MODELS



Model and photo by George Dutka

Published in *Model Railroading with George Dutka*, White River Productions 2022

Athearn blue box kit
Stripwood running board
Grandt Line window
Smokestack
Other details

MODELS



- Front Range model
- Stripwood running boards
- Grandt Line window
- Grandt Line door frame
- Black Cat Decals caboose door
- Tichy grab irons
- Smoke stack

Model and photo by George Dutka

Published in *Model Railroading with George Dutka*, White River Productions 2022